





IT&e

IT&e

There is a hum of activity when entering the new premises of IT services firm, IT&e. It is the result of the company's vision for aggressive expansion and re-invention of its existing business practices; a new direction following the consolidation of five privately owned companies through public listing.

The birth of IT&e called for a new business strategy that essentially demanded a physical environment that would create a strong identity, cultivate a corporate culture and accommodate an organisation prone to rapid change and growth.

"We needed a corporate presence – a high energy work environment where the key figure heads of each business unit could strategise and develop the company's synergy at a central location," said Steve Constantinou, Senior Manager Group Operations for IT&e.

The right location was Melbourne's Southbank precinct, and the incredible views overlooking the city skyline formed the perfect backdrop for the right corporate environment.

Schiavello interior fitout and systems worked with design firm, Architektonic, to deliver an open-plan design solution, providing accommodation that would contribute directly and positively to the business.

"The key design objectives included engendering flexibility in order to incorporate hoteling and ease of internal relocations," said Joburt Betadam Director of Architektonic.

"The design also needed to empower the 'common worker' by providing access to views and natural light. Through the design of the space and the furniture, management wanted its staff to recognise that their contribution was valuable. The objective was to provide the best possible work environment to achieve the best possible results," he said.

This project is a culmination of extensive engagement with IT&e; a prolonged process of not only inviting comment from staff, but also making presentations as concepts developed.

"The most critical presentation was to the whole organisation at a special meeting where the CEO outlined the strategic direction of the business," said Joburt Betadam. "The most important aspect of this presentation was the fact that the design of the office, the design and selection of furniture, and the associated philosophy behind these, worked to initiate a new culture for the present and well into the future."

The Sesto workstations developed by Schiavello formed an integral part of the design solution. Even though the new workstation was smaller, its functionality was far greater than existing L-shape desks. Frequent visits to the showroom to look at the prototype confirmed this to all IT&e employees and management. >

Main Photo> Sesto shaped workstations with clamp on screens deliver a flexible openplan design solution.

PROJECT SUMMARY

Project Location: Level 4, Building 3, Number 6 Riverside Quay, Southbank MELBOURNE

Client: IT&e – Steve Constantinou

Design: Architektonic – Joburt Betadam, Sally Kollosche, Owen Meade, Mary Likar, Peter Johnson

Schiavello Vic Fitout: Daron Johnson, Tony Seci

Schiavello Vic Systems: Naz Grimaldi, Angelo Cocciardi

Area: 690 m2

"We're in a dynamic industry that's growing in leaps and bounds, and one of the key things is having the ability to change, move and grow," said Steve Constantinou. "That's why we went with Schiavello's Sesto workstations, where the flexibility was so evident."

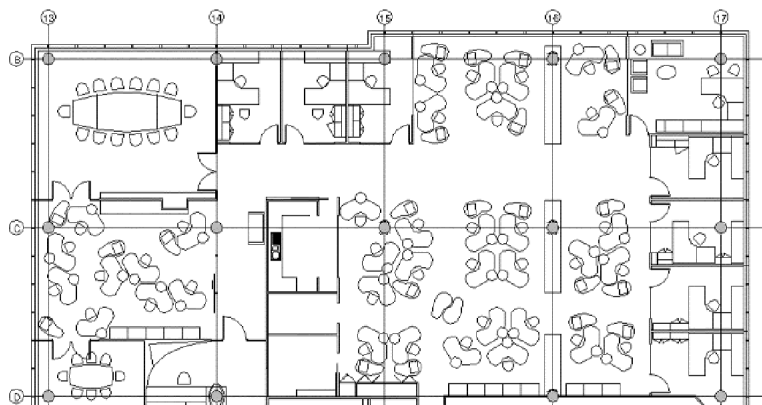
"The flexibility capabilities of the workstations has been proven more than half a dozen times so far, and every time we've reorganised and reconfigured the environment, it's worked extremely well," he said.

A unique solution to how technologies can be made to fit despite the current physical constraints of wiring, was also a result of Schiavello's contribution to the project. "We were breaking new ground in terms of cabling for communications with the use of the 'umbilical cord' concept for maximising flexibility for furniture design and connectivity into the business stream," said Joburt Betadam.

The Schiavello fitout team worked miracles to meet a very tight time frame. "We wanted it ASAP! Unrealistic in hindsight, but Schiavello got the job done in what would normally take two or three times that amount of time, it was unbelievable," said Steve Constantinou.

"I think you've given us a great corporate presence - it's very warm, friendly and inviting, and the clusters of workstations really encourage a team spirit," he concluded, "I've got to take my hat off to Schiavello, they exceeded all of our expectations."

Below Photo> Newtech desking in veneer for executive areas.



The right location, the right environment, and the right tools at their disposal: staff is ranked number one at this IT services firm. Breeding innovation and rapid business growth, IT&e have aligned their physical environment to support emerging business strategies.