

(inside)

interior design review



PP. 349/157/00509



9 1771326 1963010

**PROJECT
FORWARD**



11. CLIMATE

www.workclimate.com
connect@workclimate.com

The heavily research-based philosophy focused on understanding the increasing diversity of the workplace sees Climate break away from traditional workspace approaches. It's the first work environment tool created from the user perspective. The highly intelligent design responds quickly to the ever-changing business world. Climate evolves to diverse workplaces with its malleable design shaping to new forms intuitive to individual tasks or behaviour. Unlike other workspace systems, Climate harmoniously works in synergy with people, creating custom-designed workplaces with endless possibilities.

manufacturer Schiavello
for further information Schiavello
phone 03 9330 8888
fax 03 9330 8899



12. NEFF APPLIANCES

www.neff.com.au

German design and engineering has made Neff a leading brand in Europe. Kitchens aren't just workspaces for cooking, and cooking isn't just cooking. It's an experience, it's a passion – and Neff has captured that passion with appliances that are a pleasure to use. Neff appliances feature a range of amazing and thoughtful technological developments designed to make the cooking experience truly exciting. See the complete range at Sampford IXL showrooms: 421 Smith Street, Fitzroy Victoria, 1/278 Scarborough Beach Road, Osborne Park Western Australia and 3/45 Commercial Road (corner Doggett Street), Newstead Queensland.

for further information Neff
phone 1300 727 421



13. LAUNCH TABLE

www.stylecraft.com.au

A great addition to the very popular Launch stool, the Launch table is designed with the same principles of using a single material that is also stackable and recyclable. The award-winning stool was designed in 2007 employing an aesthetic drawn from folded forms. The Launch table follows this aesthetic, while further challenging the moulding process given the large increase in scale. The tighter edges of the table give a larger work surface, while giving strength to the silhouette. A series of flutes on the underside of the table invisibly increases the strength of the table. The Launch table is UV stabilised and suitable for outdoor use.

designer Ben McCarthy
Available in Asteroid black, star white and cosmic red, the table is 700 millimetres high by 680 millimetres in diameter
for more information Stylecraft
phone 1300 306 960



SCHIAVELLO

Corporate Profile

Established in 1966, Schiavello is internationally renowned for research, design, engineering and manufacturing of highly intelligent workspace systems that include demountable partitions, workstations, seating, storage and occasional furniture.

A top 100, private Australian company, Schiavello also offers interior project and construction management services for commercial, healthcare, hospitality, education, retail and living environments.

Schiavello's interests lie in understanding what role the quality of workspace design plays in attracting the best people; in fostering high performance and productivity.

'Our success comes from establishing valued long-term relationships with business partners, designers, management professionals and clients, where listening and establishing their needs result in effective solutions,' says Managing Director Peter Schiavello.

Not content with delivering another conventional workspace tool, Schiavello's latest workplace program, *Climate*, is a heavily research-based philosophy focused on understanding the increasing diversity of the workplace and the fast evolving global context we live and work in. The development of *Climate* saw Schiavello collaborate with world renowned

Environmental Psychologist, Dr Jacqueline Visher, who worked with Schiavello's Workplace Research Psychologist. The result is a design that adapts to the changing needs of a business and its people. *Climate* evolves with the workplace and empowers individuals and teams to work either collaboratively or privately.

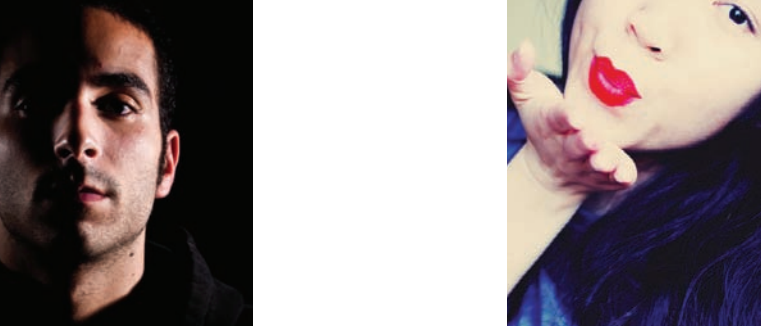
Schiavello also develops, produces and installs joinery, signage and I.T. solutions. A truly integrated offering, Schiavello can manage and deliver all sub-contractor services, many of which are in-house. Schiavello's specialist consulting services also include environmental consulting to guide organisations on sustainable practice.

Schiavello's suite of products and services is offered throughout Australia, with showrooms in virtually every Australian capital city. Additionally there are showrooms and distributors in Asia, New Zealand, the Middle East and the USA.

Schiavello has long been committed to environmental sustainability. In 1997 a set of environmental principles were developed and implemented to reduce energy, waste and emissions, and utilise responsible materials. Schiavello were the first in their industry in Australia to establish an accredited ISO 14001 Environmental Management System, among many other world leading standards.

Schiavello's vision has always been entrenched in the future; this includes an ongoing dedication to service, integrity and continuing the highly-regarded reputation as leaders in their field.

For more information go to www.schiavello.com



can work & fun know



workclimate.com

